

Manufacturer : NINGBO TIMEJOY PNEUMATIC&HYDRAULIC CO.,LTD
product : Metal one-touch Fitting

TEST REPORT

REPORT NO: 1160003140
DATE : Apirl.9th.2013
VEISION: 00

Name: Ningbo timejoy pneumatic&Hydraulic co.,ltd
Contract person: Alex Liang
Tel: 0086-13605882784
Fax: 0086-574-86621566
E-Mail: Alex@360pneumatic.com

Manufacturer : NINGBO TIMEJOY PNEUMATIC&HYDRAULIC CO.,LTD
product : Metal one-touch Fitting

Sample name	Metal one-touch Fitting	Size	-----
Entrusting party	Ningbo Timejoy pneumatic&hydraulic co.,ltd	Add	No.3 Gongs Road, Zhuangshi Industrial Zone, Ningbo City,Zhejiang Province 315201,China
Manufacturer	Ningbo Timejoy pneumatic&hydraulic co.,ltd	Testing Classification	Commissioned Testing
Quantity of Samples	5pcs	Date	Mar 25 th .2013
No. of Samples	NS130249-35#~39#		
Testing Standard	Requirements of clients	Testing item	Leakage test/Pull-off strength/burst pressure/low and high temperature test
Testing conclusion	Please refer to Testing result.		

Manufacturer : NINGBO TIMEJOY PNEUMATIC&HYDRAULIC CO.,LTD
 product : Metal one-touch Fitting

TUV Rheinland/CCIC(Ningbo) Co.,Ltd.



1 Source & Purpose of sample:

Commissioned by TIMEJOY PNEUMATIC&HYDRAULIC CO.,LTD, Metal one-touch Fitting Will be tested.

2 Test basis:

- 2.1 Test method according to requirements of clients
- 2.2 Decision criterion:

3 Sample situation:

- 3.1 Ways of delivery: Submitted by client
- 3.2 Sample quantity: 5PCS
- 3.3 Sample information:-----

4 Test project & grouping: See Table 1

Table 1

Sample Name	Sample No.	Test Projects	Remark
Metal One-touch Fitting	NS130249-35#-36#	Low and high temperature test	-----
Metal One-touch Fitting	NS130249-37#	Burst pressure	-----
Metal One-touch Fitting	NS130249-38#	leakage test	-----
Metal One-touch Fitting	NS130249-39#	Pull-off strength	-----

5 Test period & address:

Test time: April. 01 2013&April 03.2013

Test field: Ningbo automotive component testing center

6 Test result:

Manufacturer : NINGBO TIMEJOY PNEUMATIC&HYDRAULIC CO.,LTD
 product : Metal one-touch Fitting

S/N	Test projects	Requirements	Test results
1	Low and high temperature test	<p>The sample shall be placed in the chamber for 2h at 80°C, with the same time the sample full of 0.8MPa pressure. Record the unusual phenomenon during the test.</p> <p>The sample shall be tested for leakage after high temperature. The sample which is full of 0.8MPa pressure shall be placed in the water for 5min. and there shall be no continue bubbles in the water out of the sample.</p>	<p>No abnormal situation ; No continue bubbles.</p>
		<p>The sample shall be placed in the chamber for 2h at -20°C, with the same time the sample full of 0.8MPa pressure. Record the unusual phenomenon during the test.</p> <p>The sample shall be tested for leakage after high temperature. The sample which is full of 0.8MPa pressure shall be placed in the water for 5min. and there shall be no continue bubbles in the water out of the sample.</p>	<p>No unusual phenomenon; No continue bubbles.</p>
2	Burst pressure	<p>Operating pressure: 3.5MPa; Pressure hold time: 5min; No unusual phenomenon; If there is no unusual phenomenon, rise the pressure continue to the sample bursting.</p>	<p>No unusual phenomenon; Burst pressure: 6.78MPa.</p>

Manufacturer : NINGBO TIMEJOY PNEUMATIC&HYDRAULIC CO.,LTD
 product : Metal one-touch Fitting

3	leakage test	The sample full of 0.35MPa air pressure put into the water for 5min, there shall be no continue bubbles out of the sample. If no unusual phenomenon, rise the pressure to 1.4MPa, within 5min, there shall be no continue bubbles.	There are no continue bubbles when the sample pressure is 0.35MPa; and there are no continue bubbles when the pressure rise to 1.4MPa.
4	Pull-off strength	First the ends of the sample shall be inserted with PA tube, and then pull-off both of the two PA tubes at the same time from the sample. Record the max force during the pull-off test.	Pull-off strength: 454.9N.

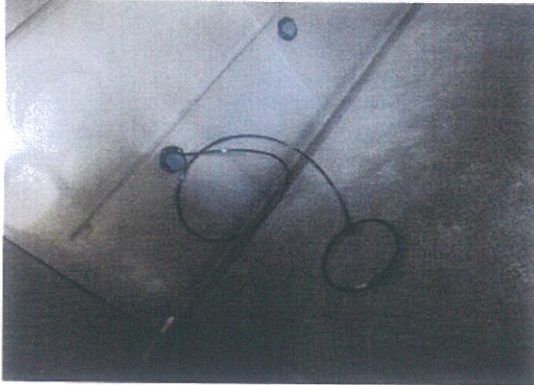
Appendix A:Sample pictures



Picture 01: Metal One-touch Fitting

Manufacturer : NINGBO TIMEJOY PNEUMATIC&HYDRAULIC CO.,LTD
product : Metal one-touch Fitting

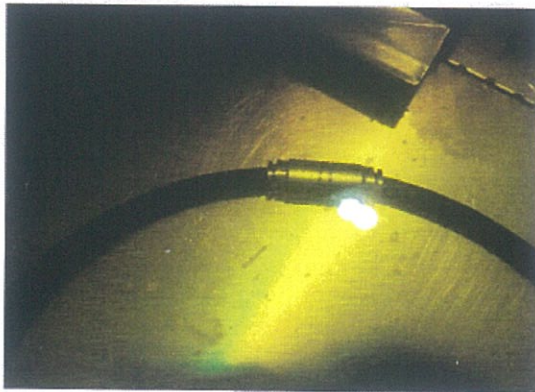
Appendix B: Test pictures



Picture 01: Low and high temperature test



Picture 02: Burst pressure



Picture 03: leakage test



Picture 04: Pull-off strength

----- THE END -----